

The Collector – The Presence of Absence

Tech Rider

Contacts:

Stage Manager: Will Flanagan; will@alchemyarts.ie; +35387 745 6725

Production Team:

Lighting Designer John Hurley; johnghurley@hotmail.com; +35387 227 0689

Projectionist Christian O'Shea; christian.k.oshea@gmail.com; +35387 764 4095

Sound Designer Arran MacGabhann; arranmacgabhann@gmail.com; +35387 2474196





Load In:

4hrs.

Set is Loaded in & constructed by Will Flanagan

Show Call:

Lighting Designer; Sound Operator & Projectionist provided by Alchemy Arts.

Running Time:

50mins.

Dressing Rooms:

1 Room required.

Set:

The set consists of 8 panels measuring 2.5m x 1m designed to lock together, as well as 1 free-standing half-sized doorway.

There are numerous props within the set including 1 x Coat stand, 12 x Suitcases, 1 x Chest, 1 Clothes Rack, 2 x Chairs & a Radio.

The acting space is 7.6m x 6m.

Sound:

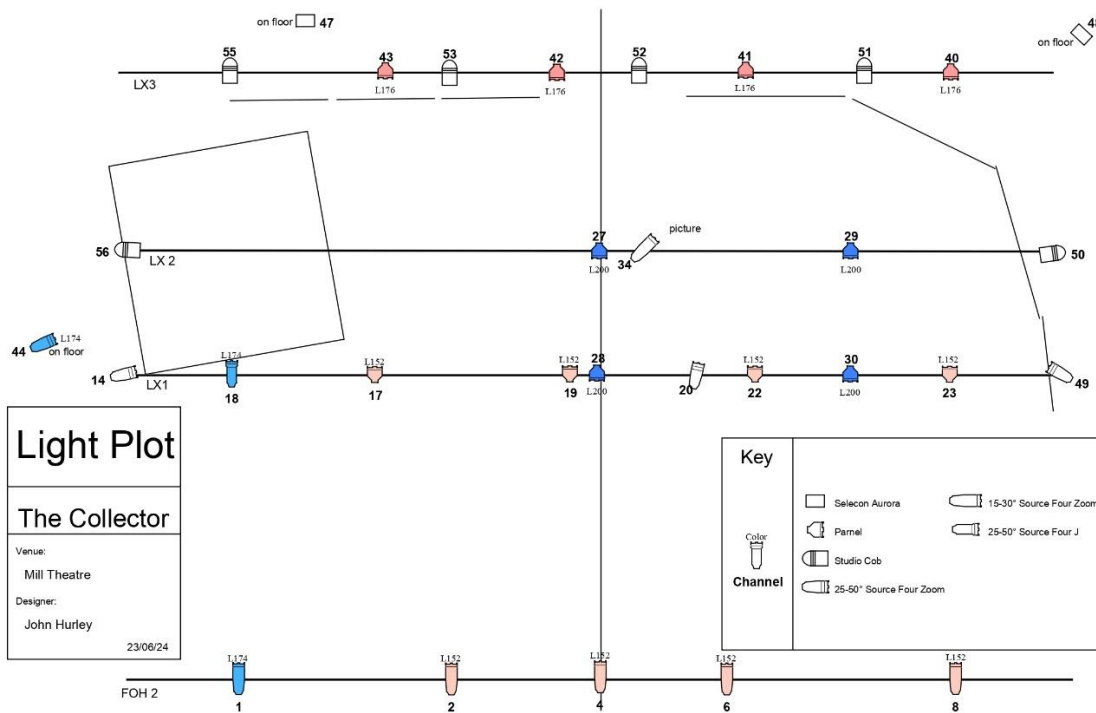
Sound will be operated and mixed by our Sound Designer from a FOH mixing position. The show is operated on Qlab, we will patch our laptop into the in-house sound system.

We will require 1 x Sound Mixing Desk.

LX:

A Lighting Plan is supplied below. The Lighting Rig is based on in-house equipment. We will be plotting the show on an ETC EOS system and will have a printout for other consoles.

We will be touring with our own stock of gels.



Projection:

We will be using a projector to map the performance space. Please let us know if you have an in-house projector or if we need to supply one.

Transport:

The set will be loaded in from a Volkswagen Transporter with a Roof Rack, so a minimum 2.5m height access is required.